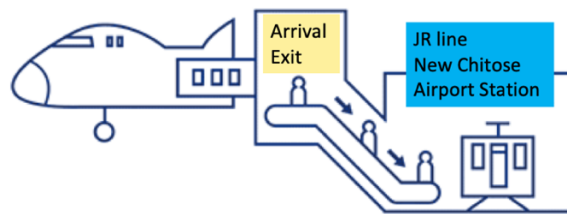


### Access from New Chitose Airport to Sapporo Park Hotel

We recommend taking the JR train line from New Chitose Airport to Sapporo Station first, and then using either the subway or a taxi to reach Sapporo Park Hotel (see pages 1 to 6). While there is direct bus transportation available from New Chitose Airport to Sapporo Park Hotel, it may be complicated for foreigners to purchase the tickets (see page 7).

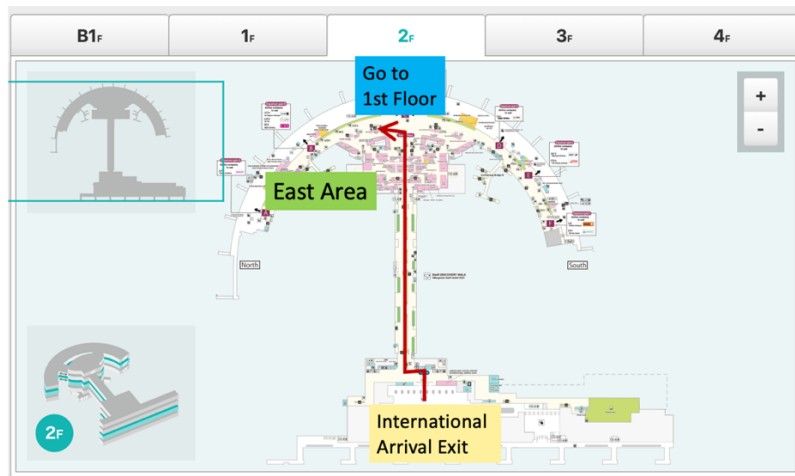
### Access from New Chitose Airport to Sapporo Station

For access to Sapporo city, please use the JR line on the first basement floor of Chitose Airport.



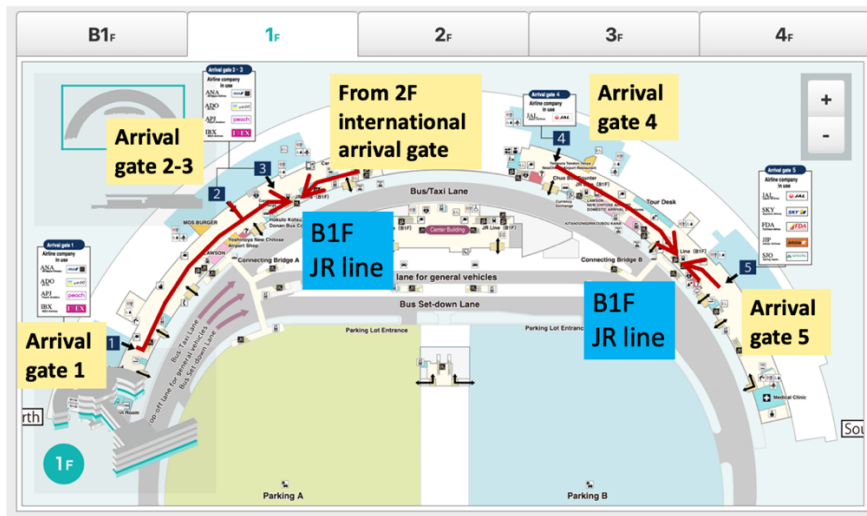
### From international airline gate

Proceed to **East Area**, and then go down the **1st Floor**.

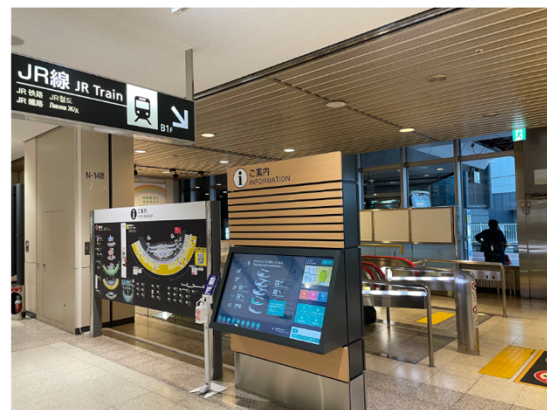


From domestic airline gate

Take the escalator down to the **first basement floor (B1F)**.

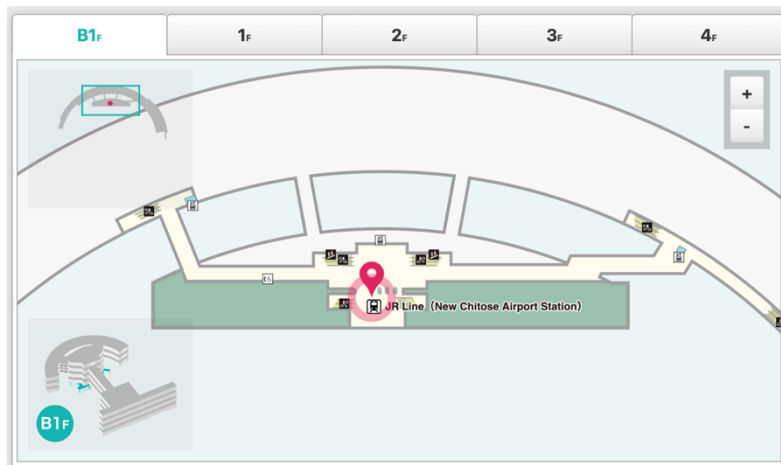


From Gate 1, 2, 3 and 2 floor



From gate 4 and 5

First basement floor



## JR New Chitose Airport Station

Please buy a ticket to Sapporo on the ticket vending machine.

New Chitose Airport Station – Sapporo Station: ¥ 1,150



JR New-Chitose Airport Station



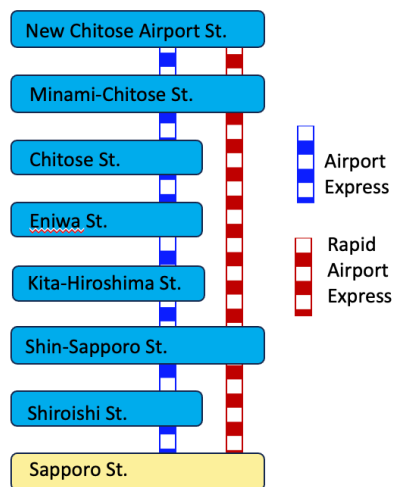
Ticket vending machine  
Please touch the bottom  
“English version” on the display



Rapid Airport Express



JR New Chitose Airport Sta.



## From Sapporo Station to Sapporo Park Hotel

Please exit the **West Gate** in JR Sapporo Station.

When you use Subway line for **Sapporo Park Hotel**, please go down the basement floor and go to **Sapporo Station (N06)** on Namboku-line from **Sapporo Station (N06)** to **Nakajima-Koen (N9)**.

Subway From Sapporo Station to the Sapporo Park Hotel: ¥ 210

The Sapporo Park Hotel: 1 min by walk from Nakajima-koen Station.

<https://park1964.com/en/access/>

When you use taxi for **Sapporo Park Hotel**, please go to the South area in Sapporo Station.

Taxi From Sapporo Station to the Sapporo Park Hotel: ¥ 2000~





Exit the West Gate in JR Sapporo station



Go down for Subway Namboku Line

Go down the first basement floor of Sapporo Station, and then go to Subway namboku-line Sapporo Station (N06)



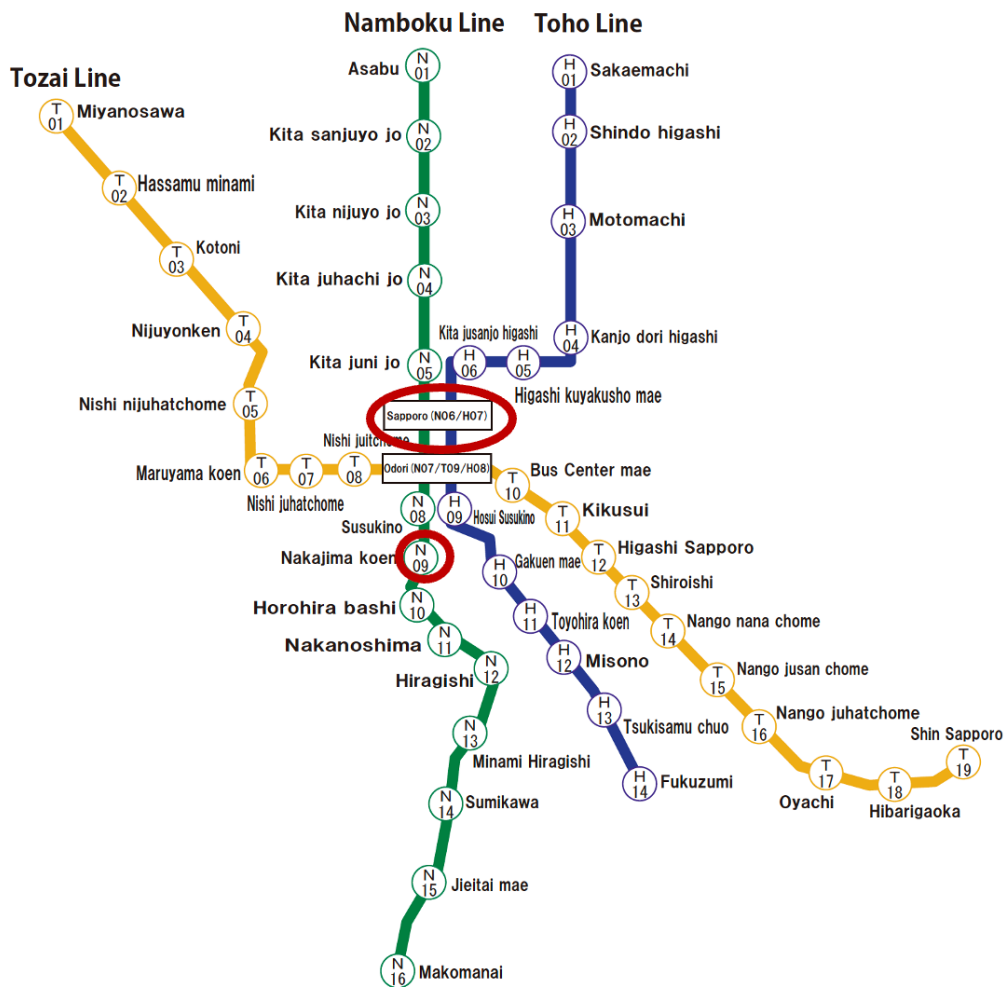
## Subway Sapporo station on Namboku Line

Please by the ticket from **Sapporo Station (N06)** to **Nakajima-Koen Station(N09)**.



Namboku Line  
Sapporo Subway Station (N06)

Ticket vending machine  
Please touch the bottom “English version” on the display

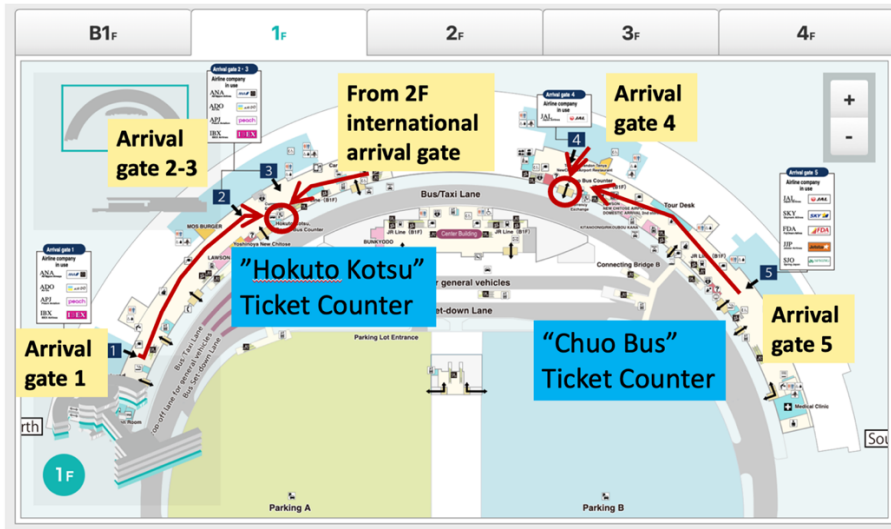


## From New Chitose Airport to Nakajima-Koen by Bus

Please go to “Hokuto Kotsu” or “Chuo Bus” ticket counter, and by the bus-ticket.

From New Chitose Airport to Nakajima-Koen ¥ 1,100

Journey time is 1 hour and 20 minutes.



### Bus Timetable

ANA exit (Hokuto Kotsu)	JAL exit (Chuo Bus)
12:05	12:07
13:05	13:07
14:05	14:07
15:05	15:07
16:05	16:07
17:05	17:07
18:05	18:07
19:05	19:07

